

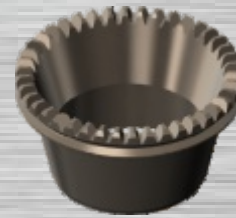
Quantum Trimmer Blade Chart



Q350 Low Profile
(ID = 3,6 cm)
#102076



Q350 Cone Blade
(ID = 1,9 cm)
#183923



Q350 Cone Blade
(ID = 24 mm)
#188010

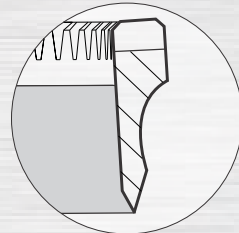


Q360
(ID = 2,96 cm)
#102077

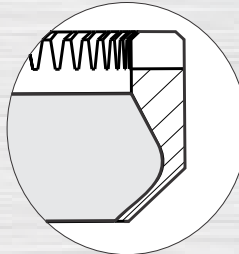


Q360 - SERRATED
(ID = 2,96 cm)
#103935

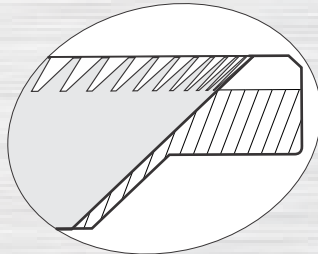
Straight, Low Profile Blade - Special profile is engineered to cut a path so the blade housing passes through the meat more efficiently. Ideal for reclaiming more high-value lean meat from bones.



Flat Blade, Hooked - Versatile 'hooked' blade design provides accurate control of trim depth. Hooked blades enhance precise trimming applications, such as defatting, removing membranes, contamination or skin patches.



Flat Blade, Angled - The 'angled' design allows for perfect fat cover control. When used in conjunction with a depth gauge, fat may be trimmed to very precise specification and provides a uniform fat cover without scoring the lean.



Q440 Low Profile
(ID = 4,21 cm)
#102081



Q620 Low Profile
(ID = 5,1 cm)
#102078



Q625
(ID = 4,48 cm)
#102079



Q625 - SERRATED
(ID = 4,48 cm)
#102092



Q500 Low Profile
(ID = 6.95 cm)
#102083



Q505
(ID = 6,29 cm)
#102086

Quantum Trimmer Blade Chart



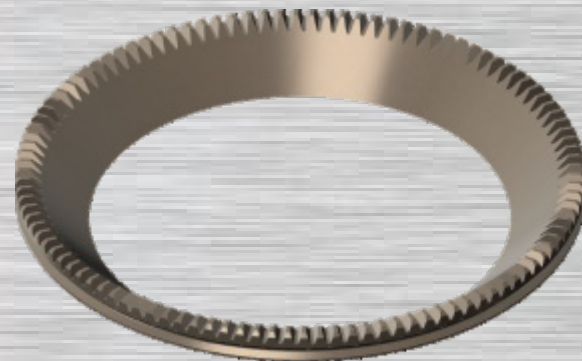
Q750
(ID = 8,85 cm)
#102085



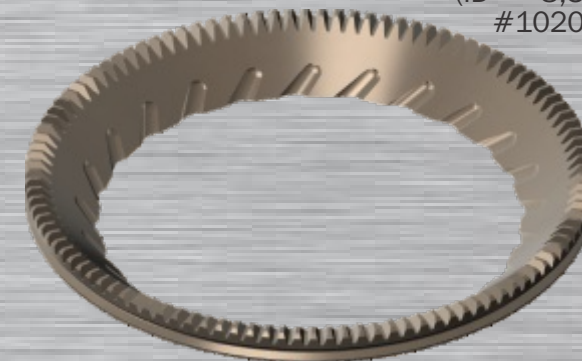
Q750 - SERRATED
(ID = 8,85 cm)
#101363



Q850
(ID = 8,31 cm)
#102087



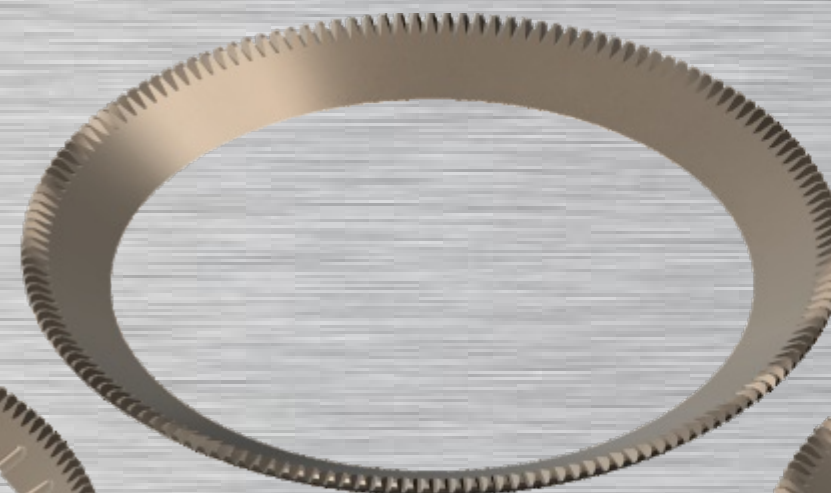
Q1850 / Q1880
(ID = 6,65 cm)
#102088



Q1850 / Q1880 SERRATED
(ID = 6,65 cm)
#101366



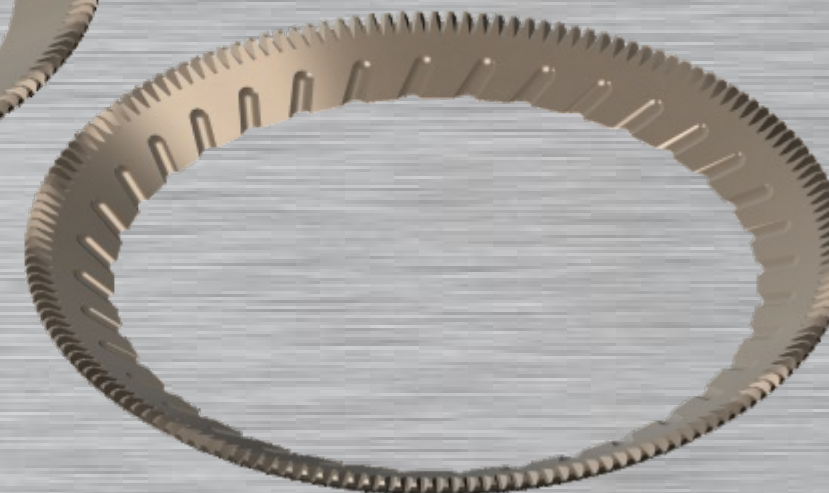
Q1000 / Q1500
(ID = 11,2 cm)
#100629



Q1300 / Q1400
(ID = 10,2 cm)
#100630



Q1000 / Q1500 - SERRATED
(ID = 11,2 cm)
#100780



Q1300 / Q1400 - SERRATED
(ID = 10,2 cm)
#100781